



# 'Dirty' Water Stress Testing

**18Mar-02April 2018**

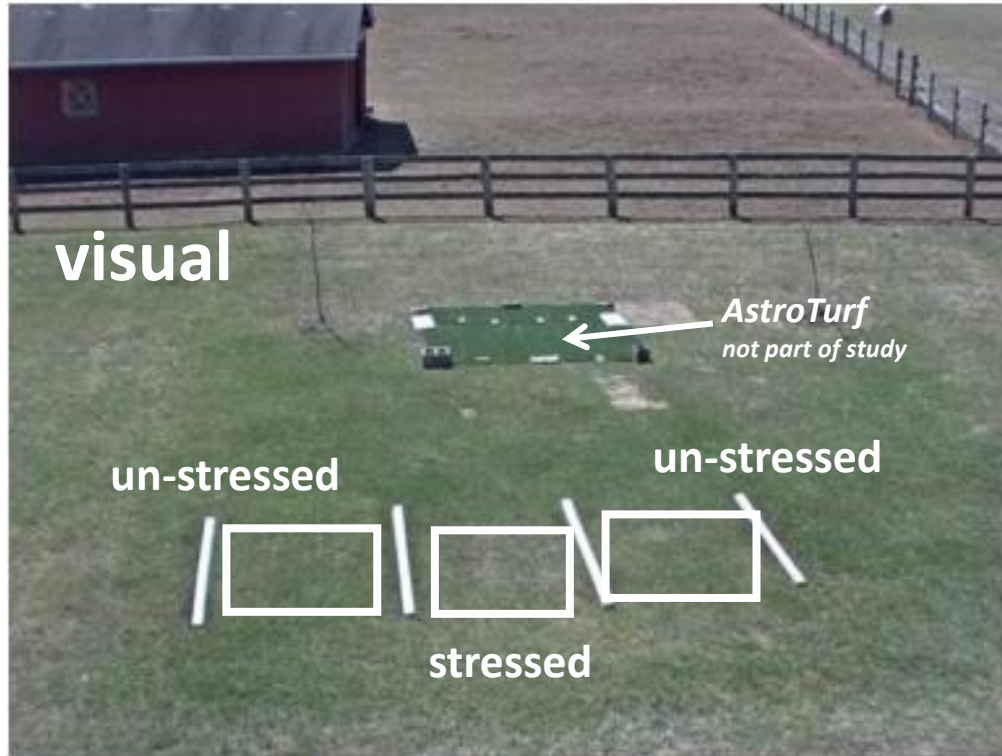
**jim etro**

[jim.etro@itricorp.com](mailto:jim.etro@itricorp.com)

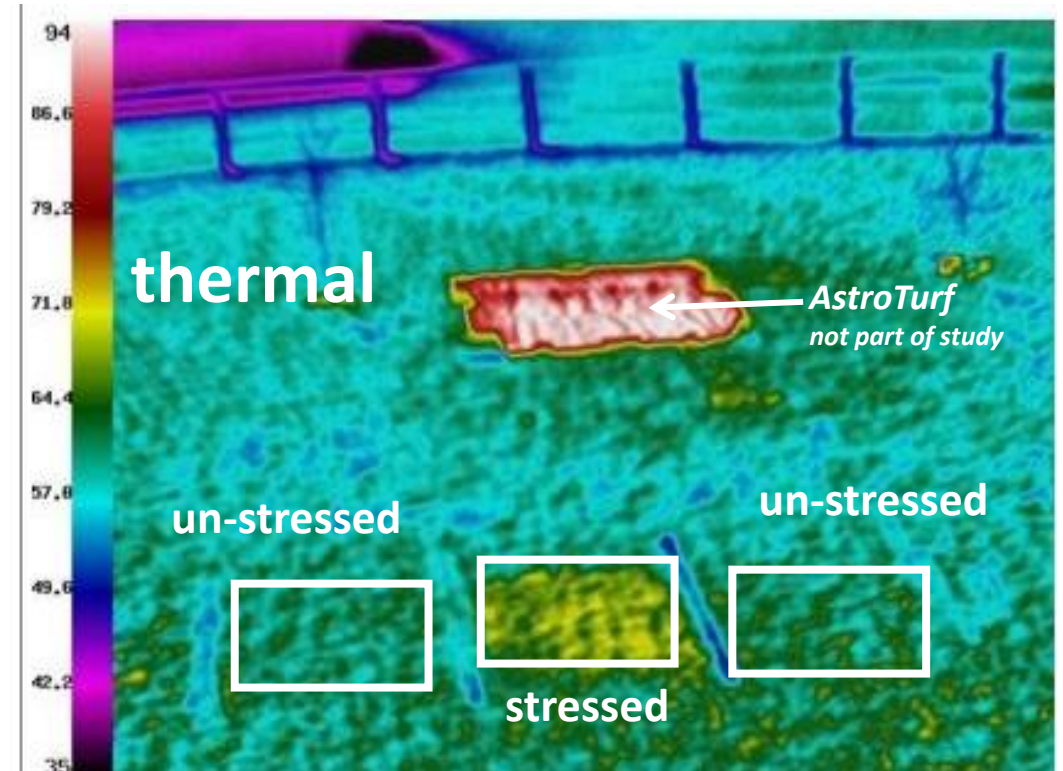
**703-489-8507**

# Measuring Impact of Using 'Dirty Water'

Measuring canopy hue (color) for Quality Indexing

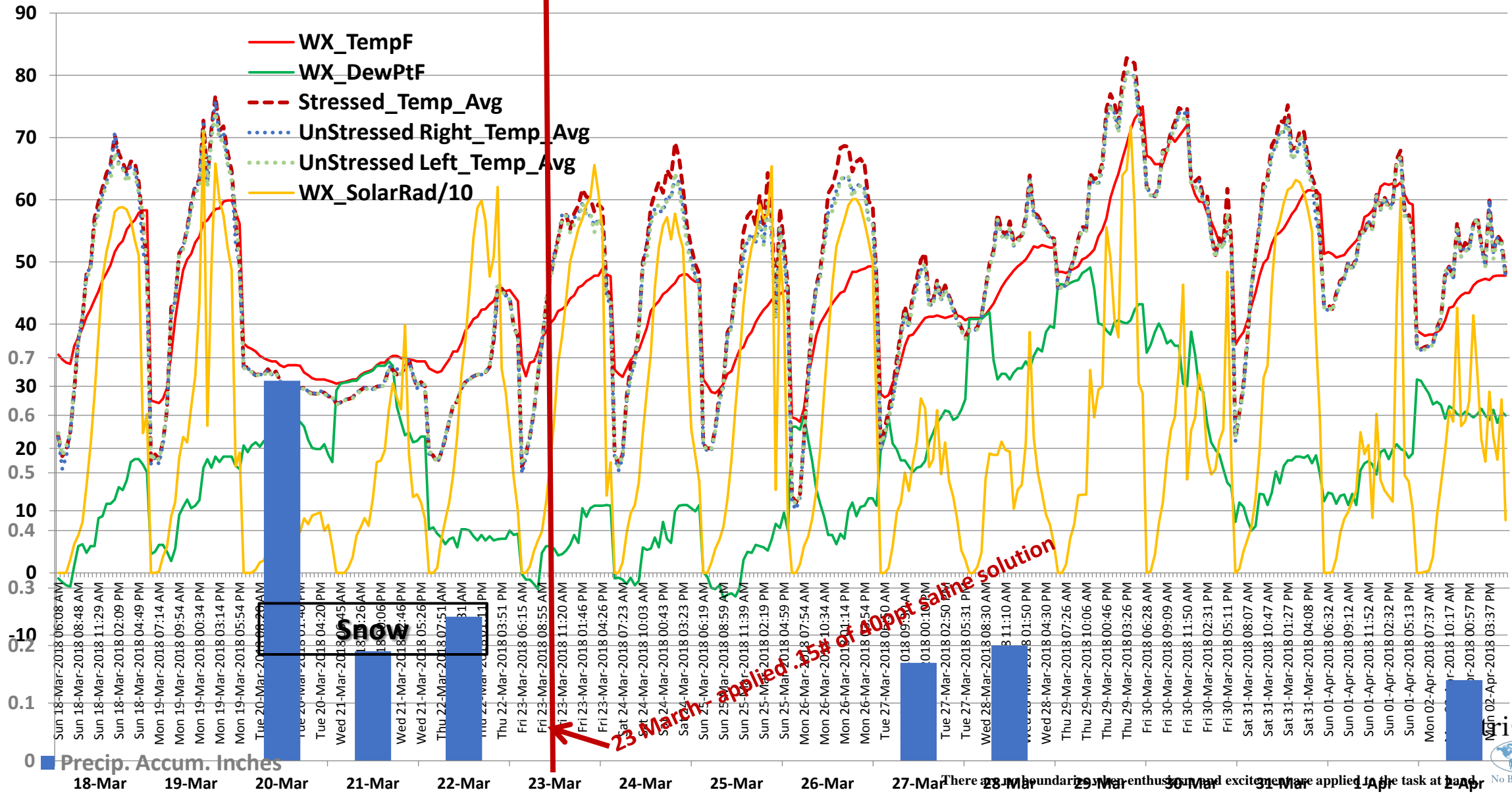


Measuring canopy temperature for Stress Indexing

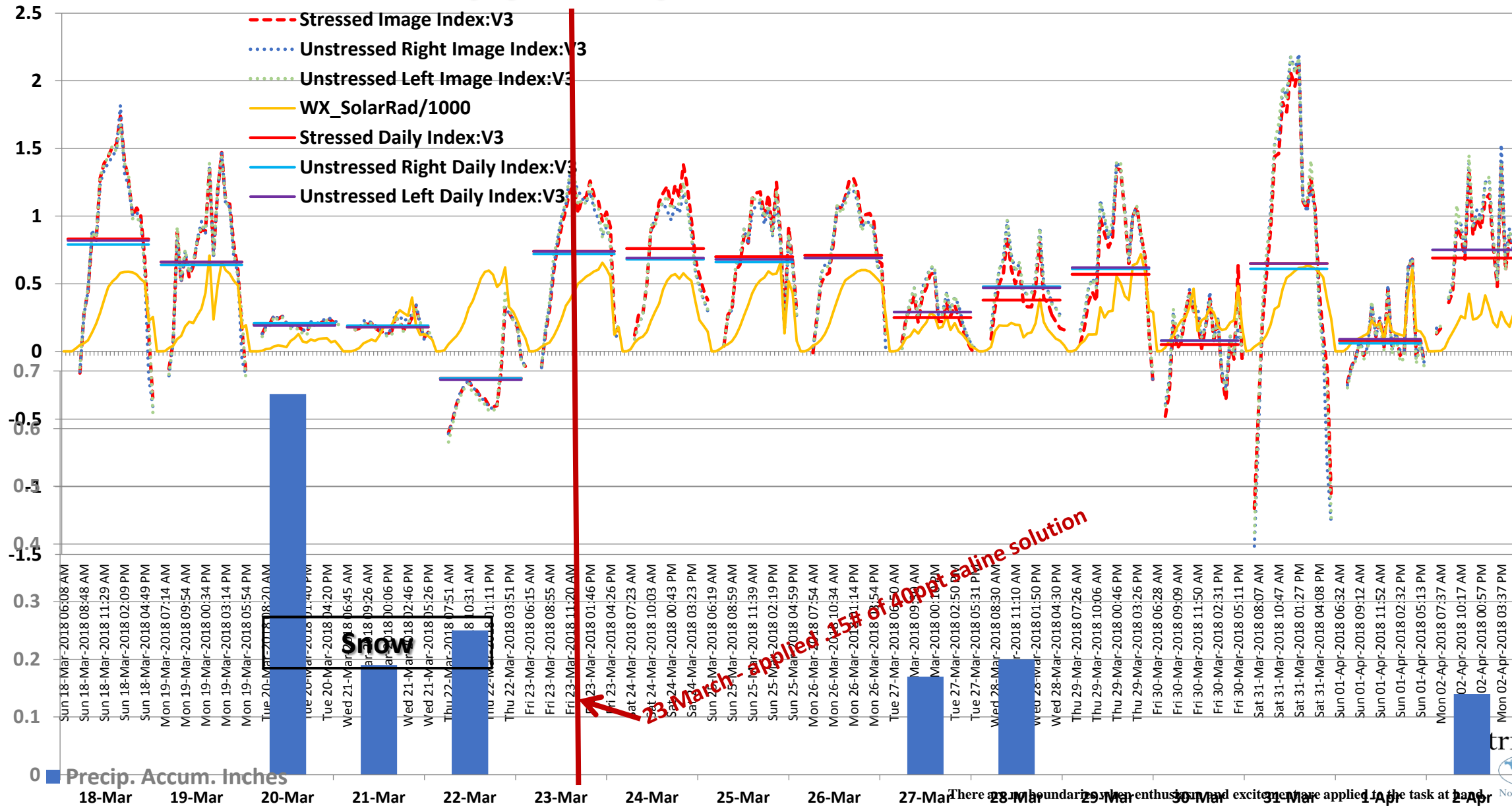


Stressor = .15inches of 4% (40ppt) saline solution ('dirty water' applied on 23 March.  
06AM-06PM, 18-26 March 2018

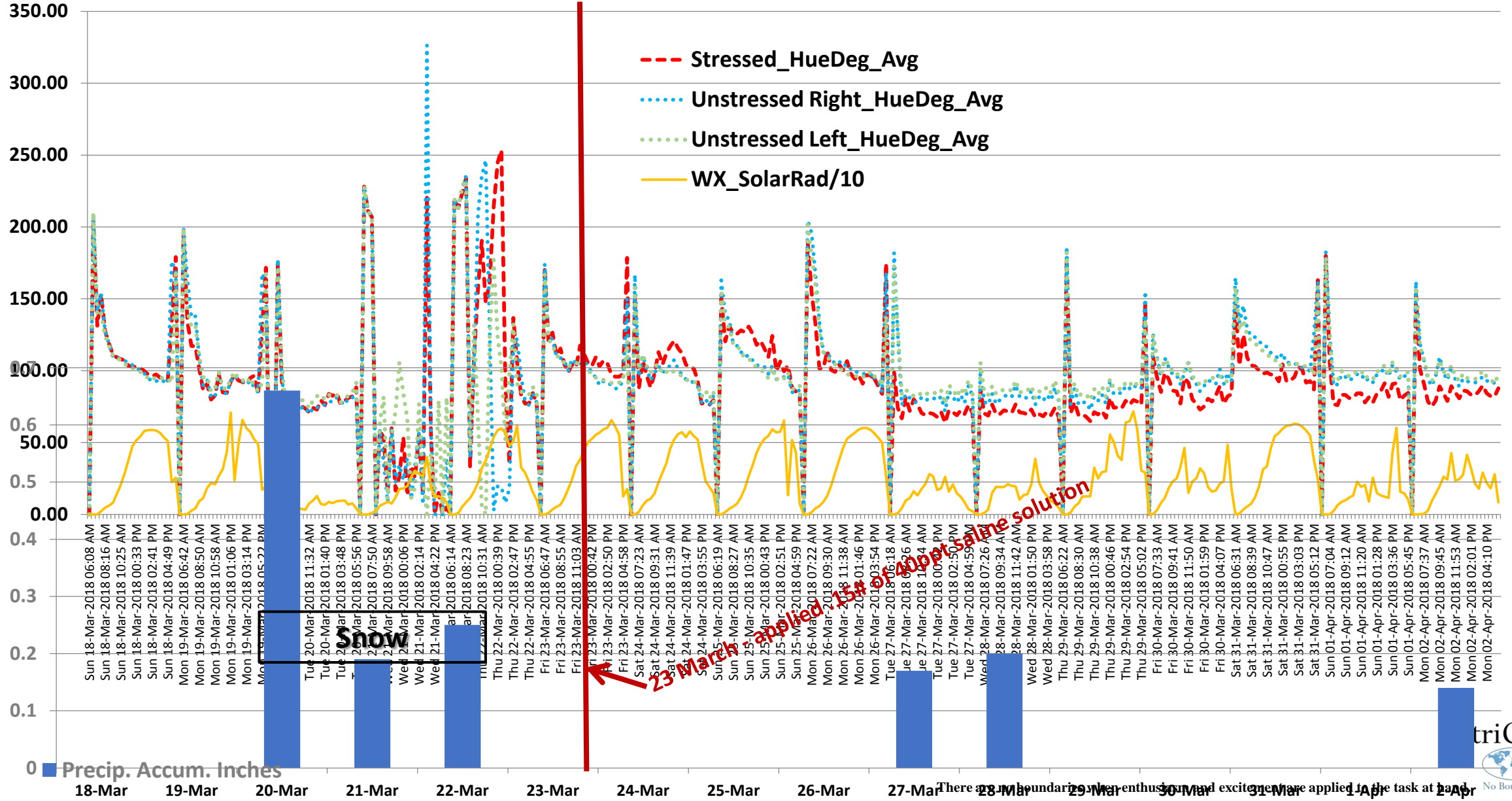
# Canopy Temperatures



# Canopy Temperature Stress Index



# Canopy Hue Degree (color)



# Deviation of Canopy Hue Degree (deviation of color)

